



EPOZEM

Mintepox® Epoxy Topping ETC 410 SF

SOLVENT-FREE EPOXY COATING MATERIAL FOR FLOORS

PRODUCT DATA SHEET

PRODUCT DESCRIPTION

Mintepox Epoxy Topping ETC 410 SF is an epoxy-based, solvent-free, two-component, flat surface flooring material.

USES

- Pharmaceutical, food, automotive, beverage industry
- In kitchens
- Hospitals
- In all production, packaging and storage areas
- In the data processing and control rooms
- In aircraft maintenance hangars
- In parking lots

ADVANTAGES

- It does not contain solvents and does not require them.
- It has high chemical and mechanical strength.
- It has high adhesion resistance.
- It has high abrasion resistance.
- It is easy to clean due to its non-porous and smooth surface.
- It is suitable for sterile conditions. It is hygienic.



Epozem Ltd Şti

Koşuyolu Mahallesi Asmadalı Sokak No 21 34718 Kadıköy İstanbul Türkiye

Tel: +90.216.4710822 Fax: +90.216.471823 info@epozem.com www.epozem.com



EPOZEM

TECHNICAL SPECIFICATIONS

Colour	Various RAL colors
Mixture Density	1.50 gr/cm ³
Adhesion Strength to Concrete	3 N/mm ²
Shore D Hardness	> 75 (DIN 53505) (ASTM D 2240)
Compressive Strength	60 N/mm ² (EN 196-1)
Adhesion Strength	3.50 N/mm ² (EN 196-1)
Surface Temperature to be Applied	15°C - 25°C
Time in Container	30 minutes at 20°C
New coat application time	12-18 hours at 20°C
Full Curing Time	7 days

CHEMICAL PROPERTIES

Mintepox Epoxy Topping ETC 410 SF has high resistance to many chemicals.

APPLICATION SURFACE PREPARATION

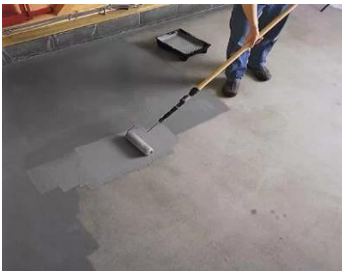
The application surface must be dry, clean, free from all loose substances, liquid and oil residues. Defects on the surface should be repaired before application.

MIXING

Mintepox Epoxy Topping ETC 410 SF components are factory weighed and packaged for mixing at the application site. There are no components other than silica sand that must be added at the time of application. Each component should first be mixed within itself, then component B (hardener) should be added to component A and mixed with a mechanical mixer at 300-400 rpm for a minimum of 3 minutes until the material becomes homogeneous.

METHOD OF APPLICATION

Mintepox Epoxy Topping ETC 410 SF is applied to the pre-prepared surface with a merino roller in 2 layers, each with a thickness of 200 microns, or by pouring a minimum thickness of 1 mm at a time to obtain a flat glossy floor. It is very important that the second coat is applied within the application time of the new coat. Otherwise, there will be no adhesion between the coats and the last coat may peel off in places over time.



Epozem Ltd Şti

Koşuyolu Mahallesi Asmadalı Sokak No 21 34718 Kadıköy İstanbul Türkiye

Tel: +90.216.4710822 Fax: +90.216.471823 info@epozem.com www.epozem.com



EPOZEM

CONSUMPTION

When **Mintepox Epoxy Topping ETC 410 SF** is applied in such a way that each layer is 200 microns, the consumption for two coats will be 600 gr/m². Rough surfaces may require the use of more materials.

CURING

When **Mintepox Epoxy Topping ETC 410 SF** completes its initial hardening period, it can be opened to pedestrian traffic in a controlled manner. It is required for 7 days at 25°C to be exposed to heavy loads and chemical effects.

CLEANING

Tools and equipment should be cleaned with thinner immediately after use. After the material has hardened, it can be cleaned from the surface only by mechanical means.

STORAGE

It can be stored in its original packaging for 12 months in a dry environment with a temperature between +5° C and 30° C.

ALERTS

The compressive strength of the concrete to be applied should be min. 25N/mm² and the tensile strength should be min. 1.5 N/mm².

When applying, the relative humidity should not exceed 50% at +10°C and 80% at +30°C.

The temperature of the application surface should be between +15° C and +25° C.

The moisture in the concrete should be less than 5%.

The temperature of the surface to be treated should be 3°C higher than the dew point.

In applications to be made in extremely cold weather, the ambient and surface temperature should be increased with the help of heaters, and the materials should be stored at 20°C ±25°C the night before.

Considering the possible movements, an appropriate joint plan should be made and the necessary joints should be moved to the coating.



Epozem Ltd Şti

Koşuyolu Mahallesi Asmadalı Sokak No 21 34718 Kadıköy İstanbul Türkiye

Tel: +90.216.4710822 Fax: +90.216.471823 info@epozem.com www.epozem.com



EPOZEM

HEALTH & SAFETY

During the application, work clothes, protective gloves, goggles and masks should be used in accordance with the Occupational and Occupational Health regulations. Please observe the warnings indicated on the boxes. Do not apply in poorly ventilated environments. Avoid contact of the material with the skin, do not inhale the material and its vapor directly. If it comes into contact with the skin, clean it using suitable cleanser, water and soap. If it has come into contact with the eyes, it is necessary to wash the eyes with water and to perform medical attention as soon as possible.

RESPONSIBILITY

The information contained in this white paper is based on our scientific and practical knowledge. The manufacturer cannot be held responsible for any consequences that may occur due to misuse and/or other than written recommendations on where and how to use the product. The above information is subject to change without prior notice. This technical data sheet is valid until a new one is prepared and invalidates old editions.

